

FIBOX

ENCLOSURE

PROGRAMME

OVERVIEW



FIBOX MCE

FIBOX MCE

FIBOX MCE

FIBOX MCE

MODULAR

SWITCH

CONTROL

ELECTRONICS

- Modular enclosures for 5–42 MCBs
- Adjustable rail depth in MCE 14-42
- Wiring through metric knockouts from five sides
- Size 2 flange allows connection to EK distribution panel or other MCE 14+ enclosure

The FIBOX MCE modular component enclosures offer practical and modern design to automation, control and switch gear applications from IP 55 (MCE FEM and MCE ISO) to IP 65 (MCE CONTROL). MCE CONTROL and MCE FEM unique features include membrane cable gland with six entries.

For larger sizes (14+) a variety of flange plates is available to the standard size 2 knock-out. All cable entry knock-outs in FIBOX MCE are in metric dimensions for hassle-free use also in the future. Application specific wiring can be done from any side and from behind easily, fast and securely.



FIBOX MCE CONTROL

MODULAR

SWITCH

CONTROL

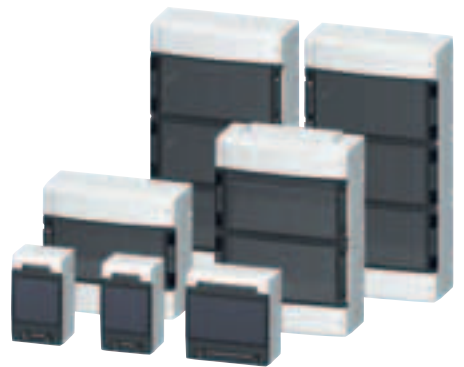
ELECTRONICS

FIBOX MCE CONTROL modular component enclosure range offers rugged and modern design for industrial (IP 65) automation and control gear applications. Unique features include multiple membrane cable glands and wide selection of gland plates for secure and application specific wiring both in assembly and on site. All cable entry knock-outs are in METRIC dimensions for hassle-free use also in the future. Lockable and secured frame mounting stops unauthorised access to components. Of five standard sizes three largest are also available with size 2 flange opening on the other end. Flanges can be selected from large variety and since the opening is identical with FIBOX EK enclosures, these FIBOX MCEs can be connected directly to separate EK applications or power distribution panels.

SIZE RANGE (mm):

200 x 116 x 105
200 x 190 x 105
280 x 306 x 145
430 x 306 x 145
580 x 306 x 145

METRIC SIZE



FIBOX MCE FEM

MODULAR

SWITCH

CONTROL

ELECTRONICS

FIBOX MCE FEM modular component enclosure range offers practical and modern design for control (IP 55) and switch gear applications. Membrane cable glands with six entries (Multi-FEM) allow quick and easy on site wiring. Wiring is also possible from behind through the base with flange plate or junction box knock-out. In larger sizes (14+) versions with flange plate knock-out (size 2/FL21) are available. All cable entry knock-outs are in METRIC dimensions for hassle-free use also in the future. DIN-rail distance of 150 mm and adjustable rail depth (in sizes 14+) together with perfectly positioned PEN rail offer more space for work and wire.

SIZE RANGE (mm):

200 x 116 x 105
200 x 190 x 105
280 x 306 x 145
430 x 306 x 145
580 x 306 x 145

METRIC SIZE



FIBOX CAB FIBOX CAB FIBOX CAB

FIBOX CAB

KWh METER

SWITCH

CONTROL

SOCKET&OUTLET

- Hinged cabinets that protect your gear
- Light weight, bright looks and durability
- Protection to IP 65
- FIBOX QUICK provides same sturdy bases with quarter turn cover screws

**SWING
DOOR**



Large selection of polycarbonate and ABS wall mounting cabinets with swing door option are available either with key lock or quick release latches.

FIBOX CAB PC/ABS WITH LATCHES OR KEY LOCKS

KWh METER

SWITCH

CONTROL

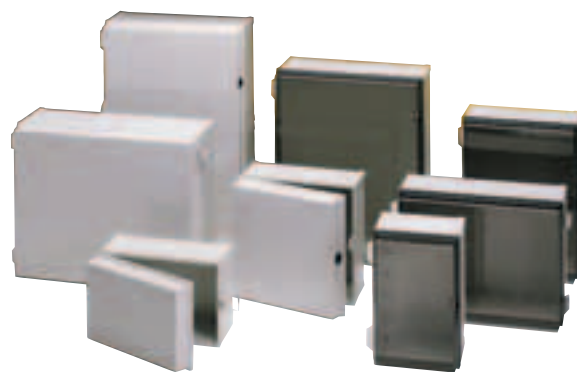
SOCKET&OUTLET

FIBOX CAB PC / ABS wall mounting cabinets are manufactured using high impact resistant polycarbonate or ABS material to withstand demanding industrial environments. Quick release latches allow easy and fast access to the cabinet. If more control over entry is needed key lock cabinet or a separate padlock to latch can be used. Protection to IP 65 is maintained when fastened.

The base of the cabinet features many internal mounting pods accommodating a variety of assembly requirements. FIBOX provides large number of accessories for CAB PC / ABS. FIBOX cabinets are delivered with hinges on the long side with the exception of three latch versions, that are also available with hinges on the short side.

SIZE RANGE (mm):

200x300x180	400x300x180
300x200x180	400x500x200
300x300x180	500x400x200
300x400x180	600x400x220



FIBOX QUICK PC/ABS – WITH QUICK TURN COVER SCREW

KWh METER

SWITCH

CONTROL

SOCKET&OUTLET

FIBOX offers QUICK solution for any separate control, switch, measurement, socket or outlet application, where the access to internal components needs to be limited to maintenance. Assembly is made easy with optional DIN-rails and –frames and with inner front plates of aluminium or insulated plastic. These additional SWING PANELS can be hinged right or left and they turn full 90° permitting total access to the components mounted inside the cabinet. All sizes are available with smoked grey transparent or grey cover and can be closed with screwdriver just with one quarter of a turn. Accessories like inspection windows, ventilation plugs and heads of cover screws finalise the care-free use.

SIZE RANGE (mm):

200x300x170	400x400x170
300x300x170	600x300x170
400x300x170	600x400x210
400x300x230	600x400x270



Medium to large sized enclosures 190x190x130 mm - 760x560x250 mm

Power distribution

FIBOX SOLID PC and ABS

Medium to large size enclosures for housing electrical and electronics equipment. A choice of either impact resistant polycarbonate or ABS material. Degree of protection for both types is IP66 / IP 67. Sturdy construction makes these medium to large size enclosures ideal for housing electrical and electronics equipment in harsh industrial environment.

SIZE RANGE (mm):

190x190x130	280x280x130
190x190x180	280x280x180
280x190x130	380x280x130
280x190x180	380x280x180
380x190x130	560x280x130
380x190x180	560x380x180

KWh METER

SWITCH

CONTROL

UL® Atex®
Available on request



FIBOX SOLID SC II

Solid Cabinets are made of very impact resistant polycarbonate material. They have ready mounted hinges and quick lock screws. For heavy industrial use where exceptional durability is needed.

Protection to IP 65.

SIZE RANGE (mm):

280x190x130	280x280x180
280x190x180	380x280x130
380x190x130	380x280x180
380x190x180	560x280x130
280x280x130	560x380x180

KWh METER

SWITCH

CONTROL



FIBOX EK

FIBOX EK range has a long history that proves its rigidity in harsh environments. Large power distribution panels can easily be build with the help of prepressed flange openings. Many mounting pods of the bases and the spectrum of accessories like the variety of flange plates create real flexibility of use and assembly. Panels can easily be grown through the flanges either by FIBOX EK or FIBOX MCE enclosures. More depth can be added with 50 mm deep extension frames to all but the smallest and the largest base size.

SIZE RANGE (mm):

190x190x130	280x280x180
190x190x180	380x280x130
280x190x130	380x280x180
280x190x180	380x280x230
380x190x130	560x280x130
380x190x180	560x380x180
280x280x130	760x560x250

MODULAR

POWER DISTRIBUTION

KWh METER

SOCKET&OUTLET

SWITCH

CONTROL



FIBOX SPACE LINK

Medium to large size enclosures made of impact resistant polycarbonate. Available either with solid sides (see FIBOX QUICK) or with flange openings on 2 or 4 sides. Large flange openings and generous dimensions ease modular assembly. Quick release cover screws secure protection to IP 65. A broad range of accessories like flange plates, cable entries, inspection windows, buss bar supports, swinging front plates, DIN-rails, frames and mounting plates is available. For 400x400 size there is an extension frame that adds 100 mm depth to enclosure. Many of these frames can be built together.

SIZE RANGE (mm):

300x200x170	400x400x170
300x300x170	600x300x170
400x300x170	600x400x210
400x300x230	600x400x270

MODULAR

POWER DISTRIBUTION

KWh METER

SOCKET&OUTLET

SWITCH

CONTROL



FIBOX VARIATION

FIBOX VARIATION features a patented docking system for creating flexible electrical distribution networks. The distribution systems MAIN CENTRE's unique 125A connector accepts a variety of CASSETTE UNITS featuring current capacities from 16A to 125A and a wide range of socket configurations. Separate connection flanges and empty cassette base units are also available. A Variation installation, either temporary or permanent, provides cost effective, flexible power distribution.

The Fibox Variation system offers flexibility both during construction and in supporting changing industrial needs. When used in place of costly permanent distribution panels with fixed socket configurations, the easily changed, quick-docking CASSETTE UNITS deliver the correct socket and current capacity where and when needed. Both Fibox EK and Fibox SPACE LINK switch and control gear enclosures support the Fibox Variation system.

SIZE RANGE (mm):

280x130x280
280x145x280
240x110x110
380x145x280
268x154x207

POWER DISTRIBUTION

CABLE MANAGEMENT

SOCKET&OUTLET



Cassettes are equipped with one to six sockets (1-3 phase) with fuses and RCCBs of 16-63A. Two of five main centre units include three sockets in addition to the cassette connector.

Small to medium sized enclosures 45x50x32 mm - 310x600x180 mm Enclosures for electronics and instrumentation

FIBOX CARDMASTER II PC and ABS

ELECTRONICS

SWITCH

CONTROL

MEASUREMENT

A new generation of CARDMASTER enclosures in polycarbonate and ABS for the increasing use of accessible components in instrumentation and electronic control units. With improved design and colours. For 17/16 and 21/18 sizes new front plate frame is available. These completely grey enclosures allow mounting of controls and meters straight to the screw fastened cover. Protection to IP 65.

SIZE RANGE (mm):

160x166x134	213x185x118	296x256x92	363x316x130
160x166x105	213x185x87	296x256x118	363x316x156
160x166x115	213x185x100		
160x166x80			
160x166x102			
160x166x106			



FIBOX PICCOLO PC and PICCOLO ABS

SWITCH

CONTROL

PUSH BUTTON

JUNCTION BOX

A range of small enclosures with round edges for pushbuttons, terminals, switches, connectors, warning lights and other small equipment. Standard PICCOLOs are available in PC and ABS in six base sizes and choices between clear transparent and grey cover. In four smallest sizes there are two cover depths, 20 mm and 40 mm. Dust- and water protection is valid up to IP 67.

SIZE RANGE (mm):

110x80x65	230x80x65
110x80x85	230x80x85
140x80x65	230x80x85
140x80x85	170x140x95
170x80x65	230x140x95
170x80x85	230x140x125

UL[®]
Available on request



FIBOX EURONORD II PC and ABS

TERMINAL BLOCKS

SWITCH

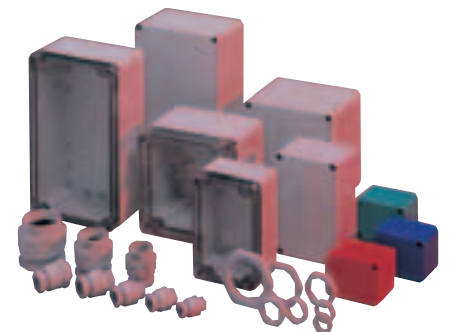
CONTROL

PUSH BUTTON

Small to medium size standard enclosures for housing of terminal blocks and other industrial components. These polycarbonate and ABS enclosures are suitable for applications where elegant appearance, light weight and durability are called for. Protection to IP 66/IP 67.

SIZE RANGE (mm):

52x50x40	120x122x65	230x300x87
50x65x45	120x122x95	230x300x110
80x82x65	120x160x90	
80x120x55	120x200x75	
80x160x65	151x201x80	
80x160x95	160x250x90	
	160x250x125	



FIBOX EURONORD II AL

TERMINAL BLOCKS

SWITCH

CONTROL

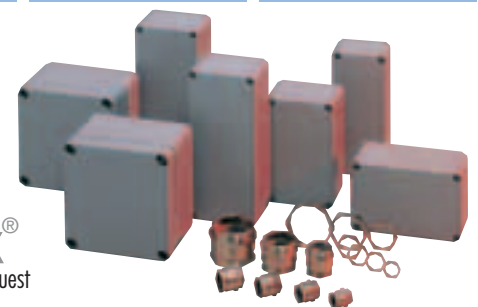
PUSH BUTTON

Small to medium size standard enclosures for housing terminal blocks and other industrial components. Aluminium enclosures are ideal for applications calling for high durability, rigid structure and conductivity of a metal enclosure. Protection to IP 66/ IP 67.

SIZE RANGE (mm):

45x50x32	81x177x57	162x263x91	230x330x110	310x600x110
66x60x46	81x252x57	160x360x90	230x330x180	310x600x180
66x100x46	125x124x81	164x564x91	230x401x110	
66x152x46	125x222x81	230x200x110	230x600x110	
82x77x57	125x362x81	230x200x180	310x403x110	
81x127x57	162x163x91	230x280x110	310x403x180	

Atex[®]
Available on request



FIBOX EURONORD II Polyester

TERMINAL BLOCKS

SWITCH

CONTROL

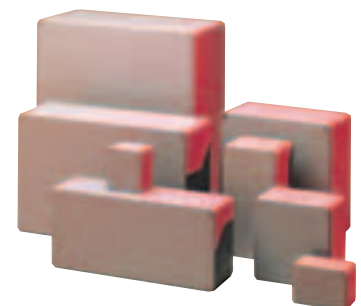
PUSH BUTTON

Small to medium size standard enclosures for housing terminal blocks and other industrial components. Polyester enclosures are recommended for use in hazardous or special chemically difficult environments.

SIZE RANGE (mm):

75x80x55	160x161x91
75x110x55	160x260x92
75x160x55	160x361x91
75x190x55	251x257x121
120x122x90	251x402x120
120x220x91	401x406x120

Atex[®]
Available on request



Windows, Ventilation, Cable Management

FIBOX WINDOWS

FIBOX inspection windows are simple to mount and safe to use, as they are made of impact resistant and self extinguishing polycarbonate. Anywhere on plastic or metal enclosures, where easy access to surface mounted controls is needed but good protection also required FIBOX inspection windows are the answer. Windows hold IP 65, when closed except five smallest, that provide protection to IP 54. Four new generation windows L12 II, L24 II, L43 II and L44 II feature transparent smoked grey polycarbonate with textured sides and stylish design.

SIZE RANGE (mm):

377x331	199x77
277x331	162x77
248x218	130x77
248x128	96x77
257x108	60x77



VENTILATION DEVICES

Temperature changes cause condensation of water in watertight plastic enclosures. FIBOX helps in fighting against humidity with draining plug and ventilation devices. They also improve the air-flow in order to carry out the extra heat produced by operating equipment or sun light. Two sizes available, larger with an option for fan assembly. IP ratings IP 34- IP 44 for ventilation devices and IP 34 for water plug.



CABLE MANAGEMENT

FIBOX provides a variety of cable entry methods according to metric standards from small EPDM rubber membrane cable grips through regular polyamide cable glands to polycarbonate flanges and large cable entries.

FIBOX CABLE GLANDS

The variety of cable entries of FIBOX is valid for cables of diameter of 3-60 millimeters. Metric cable glands listed aside can be supplied with corresponding hexagonal locknuts of polyamide. In addition to regular single cable membrane glands FIBOX offers Multi-FEM membrane cable gland good for six cables through one 50mm hole. There are also PG-sizes in plastic and membrane.

FOR CABLE mm	METRIC SIZE	CLEARANCE HOLE FOR M Ø mm
3-6,5	M12x1,5	12.5
4-8	M16x1,5	16.5
6-12	M20x1,5	20.5
13-18	M25x1,5	25.5
18-25	M32x1,5	32.5
22-32	M40x1,5	40.5
32-38	M50x1,5	50.5
38-	M63x1,5	63.5



METRIC CABLE GLAND, PA

Metric cable glands in polyamide, grey RAL 7035. Temperature range -40° —+100°. Hexagonal locknuts are available to all corresponding sizes.

FIBOX FEM

"Membrane cable glands, EPDM. IP 65 (EN 60529), Wall thickness 1,5-5 mm"

FOR CABLE mm	METRIC SIZE	CLEARANCE HOLE FOR M Ø mm
3-5	M12	12.5
5-7	M16	16.5
7-10	M20	20.5
10-14	M23/PG16	23.5
10-14	M25	25.5
14-20	M32	32.5
20-26	M40	40.5
26-35	M50	50.5
30-45	M60	60.5



FIBOX Multi-FEM

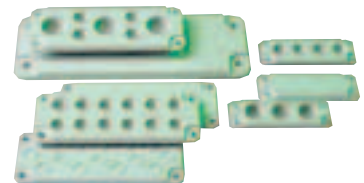
Multi-FEM membrane cable gland, IP 65, Ø 50mm, 3 x 6-10mm, 3 x 10-14mm.



FLANGE PLATES

Polycarbonate flange plates ease cable entry to FIBOX EK and some FIBOX MCE enclosures or even to metal enclosures. The wide selection of standard size 2 flange plates include threaded gland plates to metric and PG standards and knockout plates to metric, PG and inch dimensions. Membrane cable gland plates are available to both sizes 1 and 2. In addition to this there are four different threaded flanges in size 1 and smooth cover plates to all three sizes.

Dimensions of flange plates (mm):
1 49 x 140,5
2 85 x 217
3 127 x 332



CABLE ENTRIES

FIBOX offers a variety of cable entries also for stonger current. All these are designed to be fastened to standard size 2 flange opening and therefore fit to FIBOX EK and even FIBOX MCE and any steel sheet enclosure. For smaller size 1 opening there are two EPA polycarbonate —cable entries, for one and two cables. Size 2 EPA with two entries is for cables, but the one entry model can be pole mounted with screws for conduit like entry. HIBOX (for one cable) and DSHIBOX (for two cables) are polyester options in size 2 flange opening.

	FLANGE SIZE
Cable entry, 1 cable (incl. rubber gasket)	2
Cable entry, 2 cables (incl. rubber gasket)	2
Cable entry (1 cable)	1
Cable entry (2 cables)	1
Cable entry (1 cable)	2
Cable entry (2 cables)	2
Rubber gasket for cable entry EPA 1130-1230	13-31 (size mm)
Rubber gasket for cable entry EPA 2160-2260	28-60 (size mm)



FIBOX MNX

FIBOX MNX

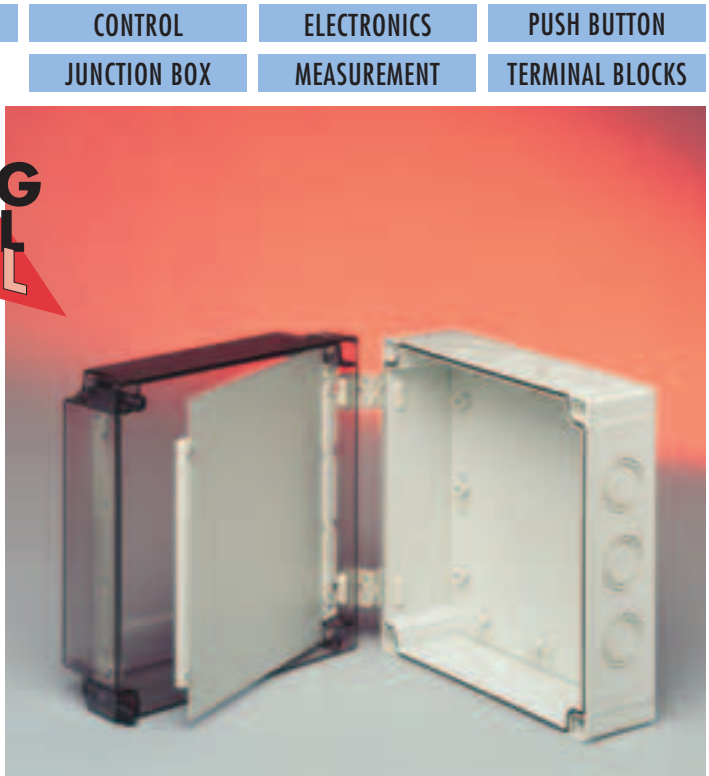
FIBOX MNX

FIBOX MNX

- Over 200 different standard enclosures with contemporary design
- Many details in design ease use
- Protection to IP 67
- Metric knock-outs in MNX PCM

**SWING
PANEL**

MNX enclosures are the choice to any place, where resistance and good looks is needed. There are five basic base dimensions, which come from one to three base heights and can be combined to up to four cover heights. Covers ranging from transparent to grey provide a total of over 200 variations. For wider versatility of uses external hinges and inner swing panels are provided as accessories. Membrane keyboards fit to all MNX covers and for some sizes there are extra recessed covers for deeper assembly.



FIBOX MNX PC AND ABS

Smooth sided base makes electronics, switch and control gear the ideal applications for MNX PC and ABS. These well designed enclosures serve also for push buttons and terminals. The rawmaterials we offer are polycarbonate (PC) and ABS. PC is the only one recommended for outdoor use. Protection to IP 67.

SIZE RANGE (mm):

100x100x35	130x130x100	255x180x63
100x100x50	130x130x125	255x180x75
100x100x60	180x130x35	255x180x88
100x100x75	180x130x50	255x180x100
130x80x35	180x130x60	255x180x125
130x80x50	180x130x75	255x180x150
130x80x60	180x130x100	255x180x175
130x80x75	180x130x125	
130x80x100	180x130x150	
130x80x125	180x180x60	
130x130x35	180x180x75	
130x130x50	180x180x100	
130x130x60	180x180x125	
130x130x75	180x180x150	

CONTROL	ELECTRONICS	PUSH BUTTON
SWITCH	MEASUREMENT	TERMINAL BLOCKS



FIBOX MNX PCM

MNX PCM is a new universal polycarbonate enclosure series with metric knockouts in the base for quick on site wiring. Applications cover housing of electrical and electronic components in the most demanding industrial environments. Protection to IP 67.

SIZE RANGE (mm):

100x100x60	180x130x75	255x180x75
100x100x75	180x130x100	255x180x88
130x80x60	180x130x150	255x180x100
130x80x75	180x130x125	255x180x125
130x80x100	180x130x150	255x180x150
130x80x125	180x180x60	255x180x175
130x130x60	180x180x75	
130x130x75	180x180x100	
130x130x100	180x180x125	
130x130x125	180x180x150	
180x130x60	255x180x63	

SWITCH	CONTROL	ELECTRONICS	PUSH BUTTON
JUNCTION BOX	MEASUREMENT	TERMINAL BLOCKS	



METRIC SIZE

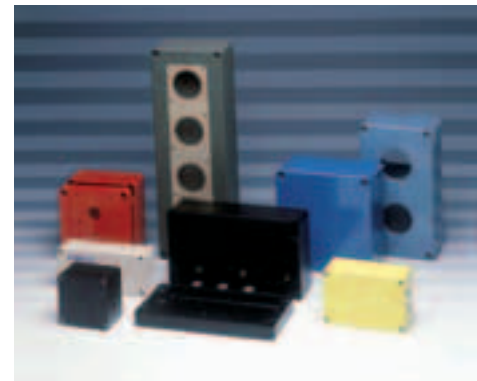
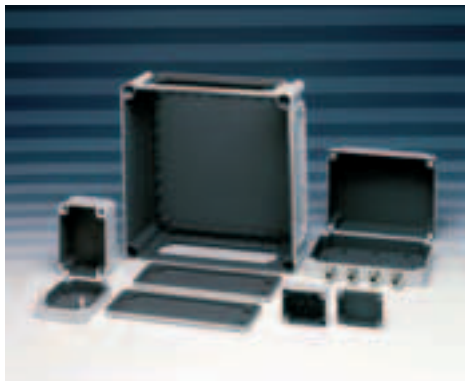
WANT SOME MORE?

More products?

This leaflet presents the highlights of FIBOX products. If your needs were not answered by these enclosures, please contact your nearest FIBOX distributor or visit our homepage at www.fibox.com.

There are more standard products and accessories, than profiled here.

More detailed information like dimension drawings, CAD files, ordering symbols and further data is provided in the Internet.



Better service?

FIBOX can deliver your enclosures the way you need; standard off-the-shelf enclosures in bulk on demand is our every day mission. Equally our injection molding machines push daily out a variety of customer specific plastic parts. And every working hour our tooling machines perforate enclosures as an answer to the needs of our customers.

If you find our standard product assortment to be too short for you, we gladly paint, print, drill, tool and mount to help you serve your customers better, easier and faster. Variety of FIBOX enclosures can also be customised in the mold; customer specific slides are considerably faster and more economic to manufacture, than completely new molds.

However, would a completely new plastic part be needed to work either with existing FIBOX enclosure part or as independent system we do have the mold design and mold manufacturing capabilities right by our production premises.

Fibox works for you. To find out more, please contact your national FIBOX retail agent. If not listed below, kindly look for your nearest FIBOX distributor from www.fibox.com.

FIBOX is distributed by:

FIBOX

www.fibox.com
info@fibox.fi

© Copyright 2004 Fibox Oy Ab

Fibox Ltd., 3 Primrose Hill Industrial Park, Orde Wingate Way, Stockton on Tees, Cleveland TS19 0BJ, England, tel. +44 1642 604 400, fax +44 1642 604 600, e-mail: sales@fibox.co.uk
Fibox Inc, 810 Cromwell Park Drive, Suite R, Glen Burnie, MD 21061, USA, tel. +1 410 760 9696, fax +1 410 760 8686, toll free 1 888 342 6987, 888 FIBOX US, e-mail: sales@fiboxusa.com
Fibox France Sarl, 28 rue Paul Henri Spaak, Parc de l'Esplanade, 77400 Saint Thibault Des Vignes, France, Tél. +33 (0)1 60 211717, fax +33 (0)1 60 211718, e-mail: service.client@fibox.fr
Fibox GmbH, Möllberger Strasse 18, D-32602 Vlotho, Germany, Tel.: +49 5733 87160, Fax: +49 5733 871610, e-mail: info@fibox.de
Fibox Schweiz GmbH, Industrieareal Jenny, CH-8866 Ziegelbrücke, Switzerland, tel +41 55 617 20 55, fax +41 55 617 20 69, e-mail: info@fibox.ch
Fibox Ltd. Korea, 1381-2, Juan-Dong, Nam-Gu, Incheon, Post No 402-853 Republic of Korea, tel. +82 32 814 6742, fax +82 32 814 6077, e-mail: fibox@kornet.net
Fibox AB, Enhagslingan 3, S-187 40 Täby, Sweden, tel. +46 8 792 2670, fax +46 8 792 0164, e-mail: info@fibox.se
Fibox A/S, Kuldysen 13, DK-2630 Tåstrup, Denmark, tel. +45 43 71 80 55, fax +45 43 71 80 35, e-mail: fibox@fibox.dk
Fibox Sp. z o.o. 04-988 Warsaw, ul. Dzieciola 19, Poland, tel. +48 22 872 9498, fax +48 22 872 9698, e-mail: info@fibox.pl
Fibox Oy Ab, Jorvaksenniitty, P.O.Box 16, FI-02421 Jorvas, Finland, tel. int. +358 9 295 531, fax +358 9 2955 3200, e-mail: info@fibox.fi, sales@fibox.fi
Fibox Shanghai Ltd., 2A, 2nd Floor, Block No. 55-56, 461 Hongqiao Road, Shanghai 200233, China, e-mail: fibox@kornet.net

Paper: Goleira Art, which has been granted
The Nordic Environmental Label: 9/2004
(15 000 pcs), Code: 9633002